



*Leaders in intelligent inventory solutions*

A blue-tinted background image showing various electronic components, including capacitors, resistors, and integrated circuits, arranged on a surface.

## Product & Solutions Brochure



[www.supplypoint.com](http://www.supplypoint.com)

# ABOUT US

SupplyPoint was first established in April 1998. Our history, is deeply embedded in 20+ years of experience and knowledge in intelligent inventory solutions. Through continuous investment, development and focused expansion. SupplyPoint together with our network of skilled and dedicated distributors, have become firmly established as the world leaders in intelligent inventory solutions.

With 9 worldwide locations and 150+ employees, we are driving our future growth through innovation and thought leadership.

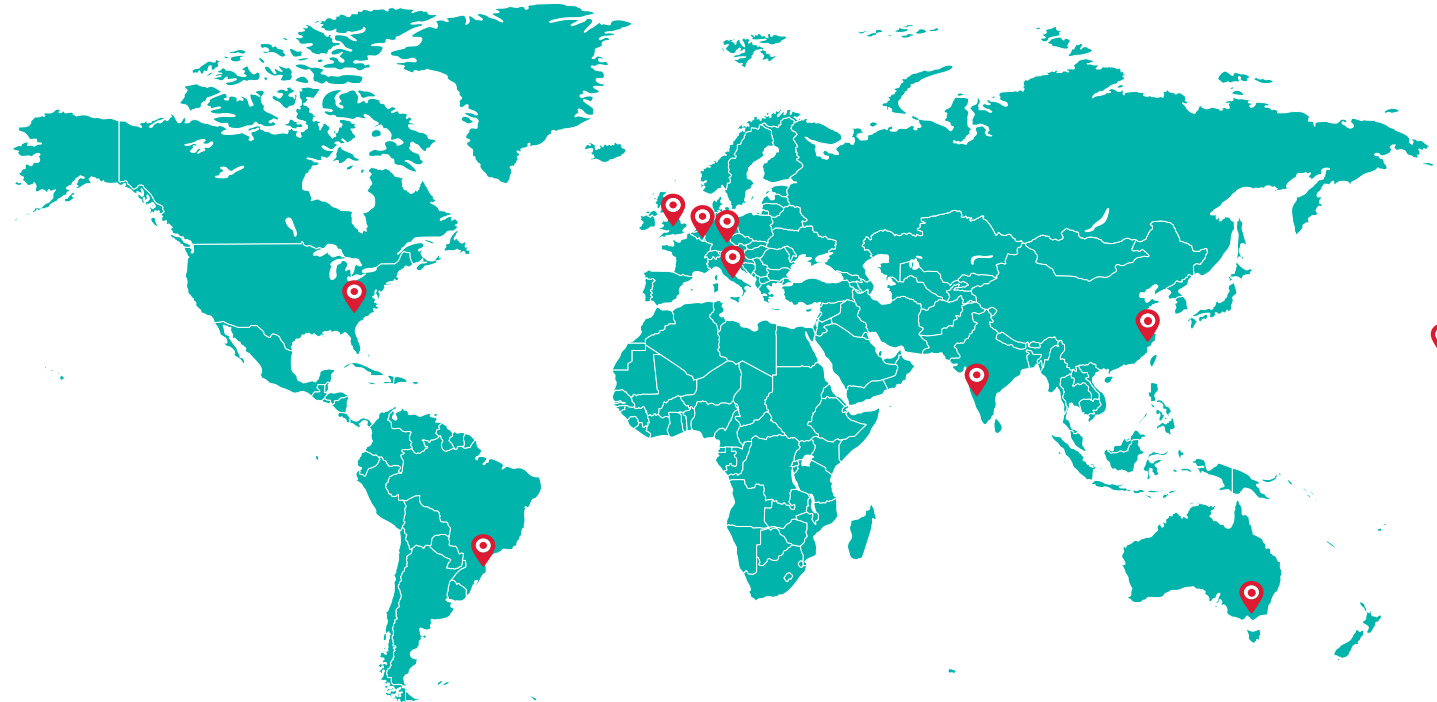
Through close working relationships with our distributors and end users, our products are continuously evolving to provide ever improving benefits. Our custom design skills, coupled with a unique knowledge of real-life inventory management requirements, enable us to produce products which consistently

deliver diverse, tangible benefits to organizations of any size.

Our customer focused consultation, implementation, training and support services ensure our users obtain the maximum benefit available from the implementation of automated inventory management. This is only made possible through our worldwide network of dedicated support offices, providing local support on a global scale, allowing us to deliver timely, effective installations every time.



# GLOBAL LOCATIONS



 **SUPPLYPOINT OFFICE LOCATIONS**

**UNITED KINGDOM**

Swift Park, Swift Valley Industrial Estate,  
Rugby, Warwickshire , CV21 1DZ  
Tel: +44 (0) 116 216 0431

**AMERICAS**

3500 Tricenter Blvd Suite D  
Durham North Carolina 27713  
Sales Tel: +1 (919) 466-0037  
Tech Support Tel: +1 (919) 466-0037

**BELGIUM**

Zwaluwbeek,  
9120 Beveren  
Tel: +32 (0) 356 83300

**BRAZIL**

Av. José Giorgi, 295  
Granja Vianna II  
Cotia SP Brazil  
Tel: +55 (011) 96897 0020

**CHINA , AUSTRALIA & NEW ZEALAND**

Unit C, Floor 1 No. 79,  
Rijing Road, Free Trade Zone,  
Shanghai 200131  
Tel: +86 (21) 5868 4300

**GERMANY**

Am Weichselgarten  
34 Erlangen 91058  
Tel: +49 9131 931 500

**ITALY**

Via Angelo Bizzozero 102,  
Cormano (MI) 20032  
Tel: +39 (0) 2 84712213

**INDIA**

Shop No. 03, Sai Shakti CHS,  
Plot No 31,32,33, Sector 5,  
Panvel 410206, India  
Tel: +91 (98) 6082 8155

# WHAT IS INTELLIGENT INVENTORY?

SupplyPoint Enterprise Solutions are designed and built using leading-edge technologies and infrastructure providing flexible, cost-saving solutions you control. Built on powerful software each point-of-use machine can operate on a LAN or synchronize over the internet to our cloud platform.

In an increasingly competitive world, our SupplyPoint systems provide comprehensive, information-centric solutions, allowing you to stay ahead of your competition. SupplyPoint units are configurable, providing many different size drawers and compartments. Rapid search and selection of items via the SupplyPoint™ software makes the system easy to use and is further enhanced with a complete LED identification system which guides users directly to the drawer containing their items.

Reduce your material handling cost by up to 40%



# OUR SOLUTIONS

Here at SupplyPoint we provide solutions not just products or services. We think about every step of your journey and work hard at ensuring you have the best experience and solution for your business.

We focus on three key areas:

## DESIGN & INNOVATE

We design and innovate, with our inhouse Product Development team. Our team take time to find cost-saving solutions to customer challenges and create world-class products that are delivered globally.

## DEVELOP

We develop our people, our products and solutions, to ensure we deliver the best customer experience. We control all aspects of manufacturing and assembly for all our products, ensuring the highest standards are maintained.

## DELIVER & SUPPORT

We deliver in-house training, installations, marketing support and aftercare, to ensure you have the tools you need, to deliver our products to your customer. We also provide a distributor portal for access to exclusive SupplyPoint material to support you.





## DESIGN & INNOVATE

### RESEARCH & DEVELOPMENT

SupplyPoint has always valued its in-house Research and Development capabilities. Taking ownership of all aspects of product design, covering Mechanical, Electronic and Software engineering, along with dedicated quality personnel, we are able to continually develop a range of products that offer an incredible degree of flexibility, features and value.

We have an expanding team of diverse engineers, bringing with them over 250 years of combined R & D experience, covering 3 core disciplines, of software, mechanical and electronic design.

We have the ability to design every aspect of a product throughout its life-cycle, including electronic PCB boards, embedded firmware, complex electrical wiring, sheet metalwork, plastic molded parts and all the software required to put users in complete control, of areas of their business that were previously unmanaged.

## DEVELOP

### MANUFACTURING

With over 100,000 square feet of space spread across two manufacturing centres located in the UK and the USA, SupplyPoint have the capacity and capability to service a global market.

Working closely together with adherence to high quality standards and lean manufacturing principles, both sites employ the latest techniques and methodologies that enables us to produce products to the same exacting standards in any manufacturing location.

Did you know we manufacture both in the UK and USA?



# DELIVER & SUPPORT

## TRAINING

We have fully equipped training facilities as well as a comprehensive product show rooms which house all the latest solutions. Our fully equipped training rooms are regularly used to train our staff and distribution partners, on all aspects of business, including: software, installation, hardware, sales and marketing.

## INSTALLATION

Our trained specialist Engineers can install our solutions all across the world. We pride ourselves in delivering \*fully assembled and ready-to-go solutions.

\*where possible

## MARKETING

We support our customers with marketing assets, so you can have full confidence in delivering SupplyPoint products and solutions, to the End User. We believe in working together to deliver the best communication and pride ourselves in making things simple and easy.

## AFTERCARE

From something as simple as identifying a component for repair to installing and implementing site wide systems. A dedicated team is based in each of our SupplyPoint locations. Our Service and Support teams offer pre and post sales advice and support to our global base.



We are passionate about customer value and strive to deliver the best service to our customers.



# WHY PARTNER WITH US?

When you come on board with SupplyPoint, you will gain a partner with over 20 years experience in intelligent inventory, an endless pool of expertise in Research & Development, Manufacturing, Marketing, Global Commercial Sales and people with passion to create and deliver great customer service.

We believe in building long-lasting partnerships across the world. We believe in being open, working with our partners with integrity and driving results. We deliver specialist product training to your technicians, engineers and sales team, so they are equipped to sell the whole solution with confidence.

We put you first, we know how important it is for you to make first impressions count and we will work with you, to ensure you have all the right tools, skills and knowledge in place.



# OUR INDUSTRIES

We provide solutions to the industries below and as we grow, we look to expand these industries to cater to a wider audience.



AEROSPACE &  
AUTOMOTIVE

We provide solutions to leading aerospace and automotive companies around the world.



ENGINEERING /  
MANUFACTURING

Our experience in Engineering and Manufacturing, leans on first-class hands on experience and knowledge.



PROCESS  
INDUSTRIES

We offer solutions to the oil, gas, food processing and packaging industries



INDUSTRIAL  
MANUFACTURING

Manage MRO, PPE and Cutting Tool industries.



LAB & MEDICAL  
MANUFACTURING

We provide solutions to pharmaceutical, medical and retail pharmacy.



RAIL

Manage inventory in sheds and make it easily accessible for engineers working on train lines.



GOVERNMENT

We support government's cost saving initiatives, through approved government frameworks.



OFFICE SUPPLIES

Keep stock of items such as stationary or general office supplies.



# OUR PRODUCTS

We deliver world-class solutions through our products. Our product range offers software, managed intelligent inventory and world class security 24/7 via our cloud-based solutions.



SOFTWARE



DRAWERS



CABINETS



CAROUSELS



CLOUD BASED SOLUTIONS



LOCKERS

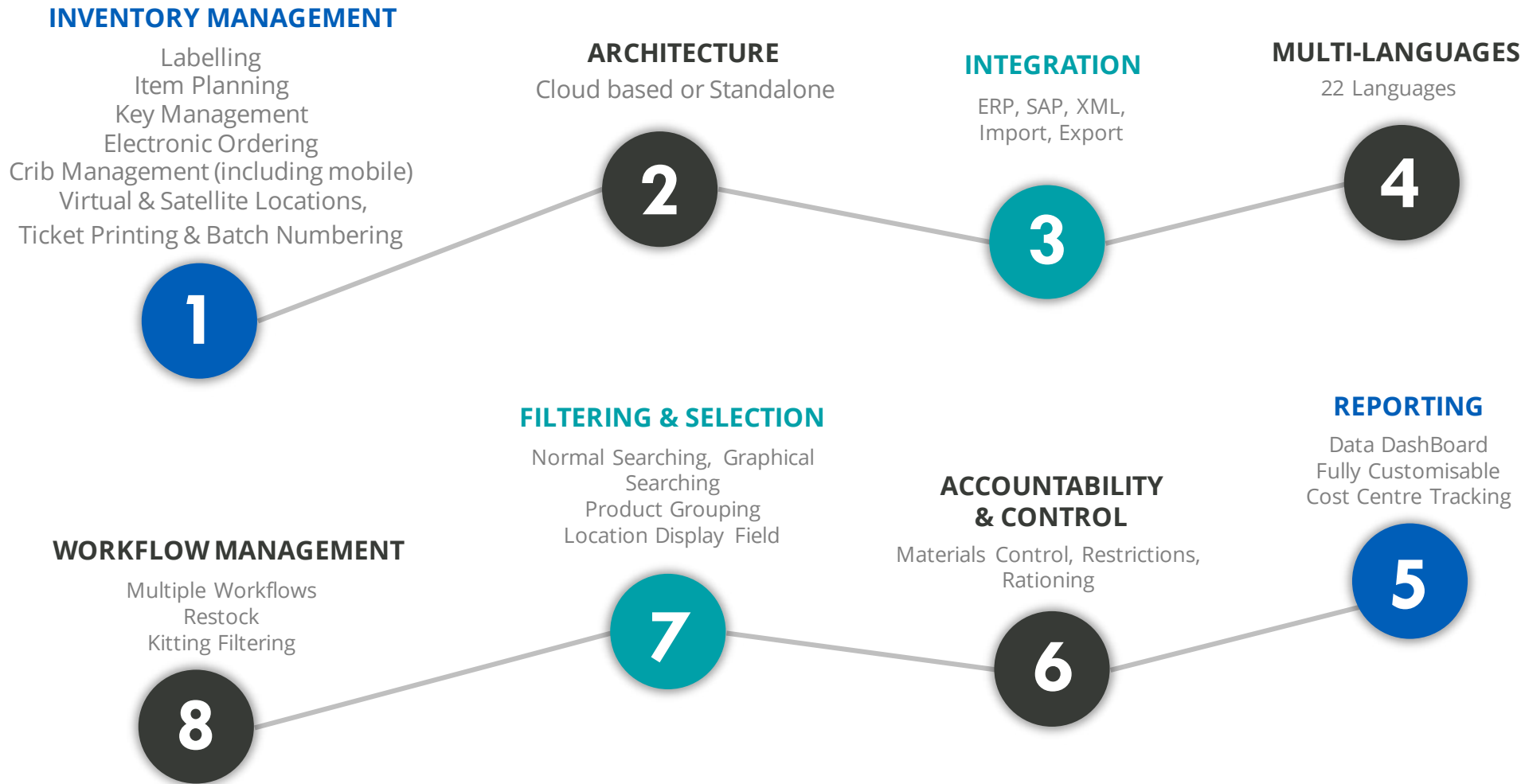
Software





# OUR SOFTWARE

The SupplyPoint Inventory Management Software Suite runs all of our equipment and supports stock room management functions/tool crib apprentices, including issue and return, swap, reworking and scrap, inventory adjustment, move stock and kit issue.



## Drawers

- ▶ 28 Level
- ▶ ModuloGen2
- ▶ Mini Modulo



# 28 LEVEL

The most advanced and versatile product in the market but yet simple, quick and easy to set up and use. The 28 Level is ideal for small components through to very large items.



- 24/7 availability of items
- Accurate accountability & inventory control
- Reduced operating costs
- Increased productivity
- Optimized inventory levels

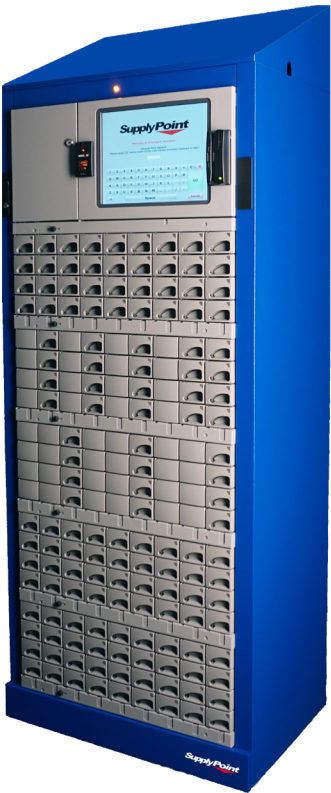
## SPECIFICATIONS

Capacity	Dimensions	Power
Stand alone: <ul style="list-style-type: none"><li>- 26 levels/ 104 locations (max)</li><li>- 1248 compartments (max)</li></ul> Add-on: <ul style="list-style-type: none"><li>- 28 levels/ 112 locations (max)</li><li>- 1344 compartments (max)</li></ul>	(D x W x H ) inches 20.1 x 21.5 x 78.7  <b>Weight Capacity:</b> 750-850 lb	120 VAC /60 Hz 230 VAC / 50-60Hz

\* Color - SupplyPoint Blue. Other colors may be available upon request  
\* For all compartment specifics and sizes please visit: [www.supplypoint.com](http://www.supplypoint.com) or feel free to call us.

# MODULOGEN2

Utilizing high strength injection molded drawers, the ModuloGen2 unit incorporates industry leading and award winning technology by SupplyPoint to provide a higher capacity machine at a competitive cost.



- Configurable drawers
- Greater capacity
- Larger drawer sizes
- 24/7 availability
- Compatibility with any SupplyPoint™ product
- 5 Drawer sizes

## SPECIFICATIONS

Capacity	Dimensions	Power
Stand-alone/Add-on 181 locations (max) 2161 compartments(max)	(D x W x H) inches 20.1 x 30.1 x 78.7  <b>Weight Capacity:</b> 11.02 lb per drawer	120 VAC /60 Hz 230 VAC / 50-60Hz

\* Color - SupplyPoint Blue. Other colors may be available upon request  
\* For all compartment specifics and sizes please visit: [www.supplypoint.com](http://www.supplypoint.com) or feel free to call us.



The logo for SupplyPoint, featuring the word "SupplyPoint" in a bold, white, sans-serif font. A red chevron shape points downwards from the end of the word "Point".

# SupplyPoint

*Leaders in intelligent inventory solutions*



# MINI MODULO

Mini Modulo incorporates industry leading and award winning technology by SupplyPoint Systems to provide a compact, small footprint solution for small cells and distributed asset management.

- Smaller 'benchtop' capacity
- Compatible with other SupplyPoint solutions
- Configurable drawers



## SPECIFICATIONS

Capacity	Dimensions	Power
Stand-alone/Add-on 36 locations (max) 432 compartments (max)	(D x W x H) inches 20.1 x 27.7 x 13.07  Weight Capacity: 88 lb	120 VAC /60 Hz 230 VAC / 50-60Hz

\* Color - SupplyPoint Blue. Other colors may be available upon request  
\* For all compartment specifics and sizes please visit: [www.supplypoint.com](http://www.supplypoint.com) or feel free to call us.

# Cabinets

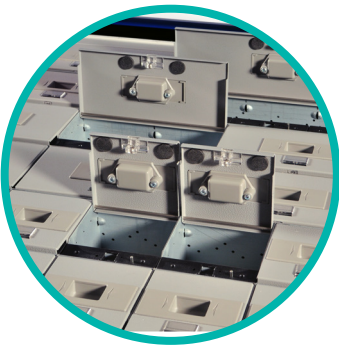
- ▶ LID Cabinet
- ▶ ECTC





# LID Cabinet

Versatile and flexible, LID incorporates many unique features making it ideal for the automotive, maintenance and industrial markets.



## SPECIFICATIONS

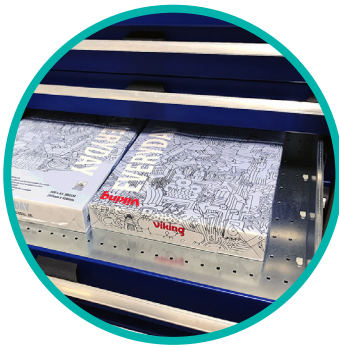
Capacity	Dimensions	Power
Up to 432 locations	(D x W x H) inches 20.6 x 31.4 x 31.4 (minimum)  <b>Weight Capacity:</b> Max drawer load capacity Standard drawer: 264.5 lb LID drawer: 198.4 lb	120 VAC /60 Hz 230 VAC / 50-60Hz

\* Color - SupplyPoint Blue. Other colors may be available upon request  
\* For all compartment specifics and sizes please visit: [www.supplypoint.com](http://www.supplypoint.com) or feel free to call us.

- 24/7 availability of items
- Reconfigurable compartments
- Accurate accountability and control of Inventory
- Reduced operating costs
- Increased productivity
- Optimized inventory levels

# ECTC

ECTC (Electronically Controlled Tool Cabinet) represents our entry level access control solution. ECTC provides drawer level inventory security and management with minimal capitol investment. Available in a wide range of cabinet sizes and drawer depths and can be easily expanded using ECTC add-on units to a maximum 10 cabinets.



## SPECIFICATIONS

Capacity	Dimensions	Power
6 cabinet options available with different drawer options	(D x W x H) inches 29.5 x 31.4x 39.3 - 47.2  <b>Weight Capacity:</b> Max drawer load capacity Standard drawer: 264.5 lb	120 - 230 VAC / 50-60Hz

\* Color - SupplyPoint Blue. Other colors may be available upon request  
\* For all compartment specifics and sizes please visit: [www.supplypoint.com](http://www.supplypoint.com) or feel free to call us.

- Flexibility
- Drawer override
- Software
- Expandability & compatibility



# Kanban

► BinSense®

## BINSENSE®

BinSense® is the first Intelligent Kanban product to be added to the SupplyPoint product portfolio. Driven by a simple IoT controller and web based software, the system supports fast moving and low cost inventory through constant notification of inventory levels and automatic reordering resulting in the elimination of many of the manual replenishment steps associated with this type of inventory.

- Automatic Notification
- Visual Feedback
- Multiple Bin Sizes
- Reconfigurable
- High Capacity
- Heavy Duty
- Expandable



### SPECIFICATIONS

Capacity	Dimensions	Power
72 locations per frame (max.) Small bins - 12 locations per shelf (max.) Medium bins – 8 locations per shelf (max.) Large bins – 6 locations per shelf (max.) <b>Standard configuration:</b> 2 shelves with 12 Small Bins 2 shelves with 8 Medium Bins 2 shelves with 6 Large Bins	(L x W x H) inches 27.6 x 64.7 x 78.8 <b>Weight Capacity:</b> 22.04 lb per bin	120 - 230 VAC / 50-60Hz

\* Color - SupplyPoint Blue. Other colors may be available upon request  
\* For all compartment specifics and sizes please visit: [www.supplypoint.com](http://www.supplypoint.com) or feel free to call us.



# Carousels & Lockers

- ▶ Rotopoint
- ▶ Clear Front Locker

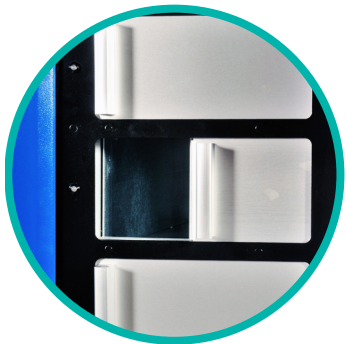
## ROTOPOINT

The Rotopoint provides a scalable and cost effective solution for the secure management of a wide range of high and low usage items. It's high capacity makes it ideal for the management and control of PPE and MRO consumables.

- Reconfigurable compartments

- 6 variations

- Ideal for PPE and MRO consumables



### SPECIFICATIONS

Capacity	Dimensions	Power
468 compartments (max) (re-configurable on the fly)	(D x W x H) inches 40.5x 40.5 x 79.1 (with the lid)	120 VAC /60 Hz 230 VAC / 50-60Hz
	<b>Internal Weight Capacity:</b> 551.1 lb	

\* Color - SupplyPoint Blue. Other colors may be available upon request  
\* For all compartment specifics and sizes please visit: [www.supplypoint.com](http://www.supplypoint.com) or feel free to call us.

# CLEAR FRONT LOCKER

Our Clear Front Lockers are a low cost, fixed configuration. They are designed to auto-lock on closure, are simple, reliable and able to vend items of various sizes and types.

- Secure control of larger items
- A variety of locker configurations
- Clear doors with LED lighting
- Expandable and easy to use



## SPECIFICATIONS

Capacity	Dimensions	Power
Stand-alone/Add-on Up to 27 small lockers 4 configurations available S3 – 27 small doors S2 - 18 medium doors S4 – mix of 18 small, medium and large doors	(D x W x H ) inches 20.1 x 43 x 78.7  <b>Individual Lockers</b> (D x W x H) inches Small locker: 19.6 x 12.5 x 6.06 Medium locker: 19.6 x 12.5 x 10 Large Locker: 19.6 x 12.5 x 20.27  <b>Weight Capacity:</b> 750-850 lb	120 VAC /60 Hz 230 VAC / 50-60Hz

\* Color - SupplyPoint Blue. Other colors may be available upon request  
\* For all compartment specifics and sizes please visit: [www.supplypoint.com](http://www.supplypoint.com) or feel free to call us.

# Cloud Based Solutions

- ▶ WebSync
- ▶ EndPoint Management





# WEBSYNC

WebSync is a service from SupplyPoint to allow the remote administration, reporting and support of vending machines using an internet connected terminal from anywhere in the world. WebSync benefits stakeholders throughout the supply chain, increasing productivity and reducing costs.

- Inventory data anytime, anywhere
- Two-way synchronization
- No local software
- Multi-tiered access
- Supplemental backups
- Disaster recovery

## WHAT IS WEBSYNC?

WebSync is a cloud based platform and service that allows you to manage your SupplyPoint vending machines from anywhere in the world, through a convenient web interface. With WebSync you can view and edit data for a SupplyPoint vending machine as well as create and run new and existing reports and setup automated tasks for the vending machine.

## WHY WEBSYNC?

To provide distributors and customers a simple and easy way to operate and manage their SupplyPoint vending machines. SupplyPoint WebSync benefits stakeholders throughout the supply chain, increasing productivity and reducing costs.



# ENDPOINT MANAGEMENT

EndPoint Management is a cloud based security, compliance and support service for the Windows PCs running SupplyPoint vending machines.

- ▶ OS Patching
- ▶ Anti-Virus
- ▶ On-Demand Remote Control
- ▶ Proactive System Monitoring and Alerts
- ▶ Asset Tracking

- Benefits**
- Security compliance
  - Risk management
  - Real-time support



**We help you manage  
inventory securely  
and easily.**







## CONTACT US

---

For more information on our products and solutions go to [www.supplypoint.com](http://www.supplypoint.com) or contact your local regional office and we'd be happy to discuss your business requirements

### US SALES

**E:** [ussales@supplypoint.com](mailto:ussales@supplypoint.com)

**T:** +1 919 466 0037

### TECH SUPPORT

**E:** [support@supplypoint.com](mailto:support@supplypoint.com)

**T:** +1 919 466 0037

### MARKETING

**E:** [marketing@supplypoint.com](mailto:marketing@supplypoint.com)

**T:** +44 (0) 116 216 0431





*Leaders in intelligent inventory solutions*



3500 Tricenter Blvd Suite D

Durham NC 27713

USA

Tel: +1 919 466 0037

© SupplyPoint 2020

This product brochure may be refined in the future, please see our website for up to date details

[www.supplypoint.com](http://www.supplypoint.com)